



Ellis Packaging Ltd., 1830 Sandstone Manor, Pickering, ON  
August 2017 Waste Diversion Report

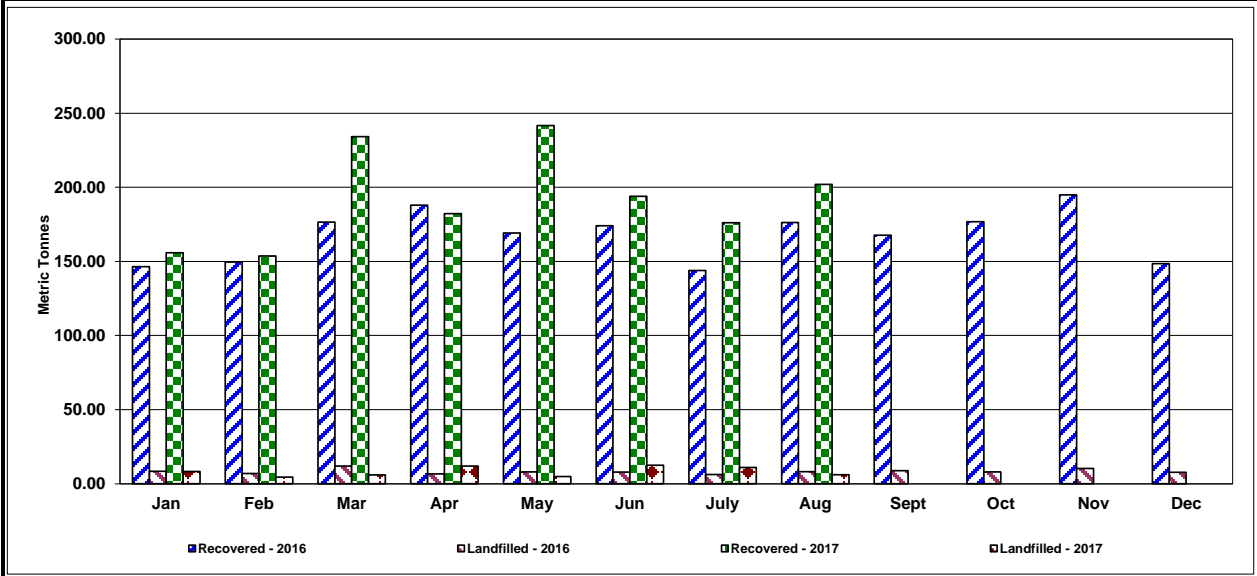
2017																				
Month	PBBC	OCC	BCL	OMF	BBB	FBB	CGAMP	Skids	Haz Mats	Misc							Recovered - 2017	Landfilled - 2017	Total	Diversion
Jan-17	6.32	3.30	142.06	3.77			0.10	0.26									155.81	8.22	164.03	95%
Feb-17			148.02	5.43			0.21										153.66	4.39	158.05	97%
Mar-17		1.75	221.59	4.73		3.34		1.44		1.30							234.15	5.91	240.06	98%
Apr-17	2.60	0.20	174.29	2.67		0.44				2.10							182.30	11.87	194.17	94%
May-17	1.99		222.25	3.78			0.04	0.56		13.05							241.67	4.90	246.57	98%
Jun-17		0.60	181.60	10.22			0.10	0.46		0.90							193.88	12.45	206.33	94%
Jul-17		0.41	166.70	7.88			0.27			0.90							176.16	10.91	187.07	94%
Aug-17	2.06		196.84	1.95		1.08											201.93	6.08	208.01	97%
Sep-17																				
Oct-17																				
Nov-17																				
Dec-17																				
<b>Total</b>	<b>12.97</b>	<b>6.26</b>	<b>1453.35</b>	<b>40.43</b>	<b>0.00</b>	<b>4.86</b>	<b>0.72</b>	<b>2.72</b>	<b>0.00</b>	<b>18.25</b>	<b>0.00</b>	<b>0.00</b>	<b>0.00</b>	<b>0.00</b>	<b>0.00</b>	<b>0.00</b>	<b>1539.56</b>	<b>64.73</b>	<b>1604.29</b>	
<b>Average</b>	<b>3.24</b>	<b>1.25</b>	<b>181.67</b>	<b>5.05</b>	<b>0.00</b>	<b>1.62</b>	<b>0.14</b>	<b>0.68</b>	<b>0.00</b>	<b>3.65</b>	<b>0.00</b>	<b>0.00</b>	<b>0.00</b>	<b>0.00</b>	<b>0.00</b>	<b>0.00</b>	<b>192.45</b>	<b>8.09</b>	<b>200.54</b>	<b>96.0%</b>
Notes:																				
2016																				
Month	PBBC	OCC	BCL	OMF	BBB	FBB	CGAMP	Skids	Haz Mats	Misc							Recovered - 2016	Landfilled - 2016	Total	Diversion
Jan-16	1.88	0.60	129.30	13.16				0.68		0.78							146.40	8.37	154.77	95%
Feb-16	2.16	1.78	139.16	1.58		0.89		0.98		3.01							149.56	6.89	156.45	96%
Mar-16	2.00		165.00				0.15			9.36							176.51	11.94	188.45	94%
Apr-16	1.71	0.40	167.46	8.67		2.01	0.25	0.76		6.68							187.94	6.57	194.51	97%
May-16		5.66	157.91	1.18		0.28	0.12			3.98							169.13	7.92	177.05	96%
Jun-16		0.60	143.18	28.71				0.64		0.98							174.11	7.80	181.91	96%
Jul-16		0.40	119.62	17.24						6.56							143.82	6.24	150.06	96%
Aug-16		1.04	162.40	12.42				0.46									176.32	8.13	184.45	96%
Sep-16	11.21		147.59	8.43		0.38	0.09										167.70	8.77	176.47	95%
Oct-16	1.72	0.60	150.79	18.57				0.66		4.40							176.74	7.91	184.65	96%
Nov-16	0.40	1.20	185.25	7.27			0.06			0.78							194.96	10.35	205.31	95%
Dec-16		0.69	141.81	5.27			0.04	0.41		0.30							148.52	7.74	156.26	95%
<b>Total</b>	<b>21.08</b>	<b>12.97</b>	<b>1809.47</b>	<b>122.50</b>	<b>0.00</b>	<b>3.56</b>	<b>0.71</b>	<b>4.59</b>	<b>0.00</b>	<b>36.83</b>	<b>0.00</b>	<b>0.00</b>	<b>0.00</b>	<b>0.00</b>	<b>0.00</b>	<b>0.00</b>	<b>2011.71</b>	<b>98.63</b>	<b>2110.34</b>	
<b>Average</b>	<b>3.01</b>	<b>1.30</b>	<b>150.79</b>	<b>11.14</b>	<b>0.00</b>	<b>0.89</b>	<b>0.12</b>	<b>0.66</b>	<b>0.00</b>	<b>3.68</b>	<b>0.00</b>	<b>0.00</b>	<b>0.00</b>	<b>0.00</b>	<b>0.00</b>	<b>0.00</b>	<b>167.64</b>	<b>8.22</b>	<b>175.86</b>	<b>95.3%</b>
Legend																				
All weights provided in Metric Tonnes																				
<b>PBBC</b>	Printed Bleached Board Cuttings						<b>CGAMP</b>	Cans, Glass, Mixed Plastics, Al									<b>Recovered - 2017</b>	Recovered		
<b>OCC</b>	Old Corrugated Containers						<b>Skids</b>	Skids/Pallets									<b>Landfilled - 2017</b>	Landfilled		
<b>BCL</b>	Boxboard Cuttings Loose						<b>Haz Mats</b>	Hazardous Materials									<b>Total</b>	<b>Total</b>		
<b>OMF</b>	Other Mixed Fibre						<b>Misc</b>	Miscellaneous Materials												
<b>BBB</b>	Boxboard Baled																			
<b>FBB</b>	Foil Bleachboard																			



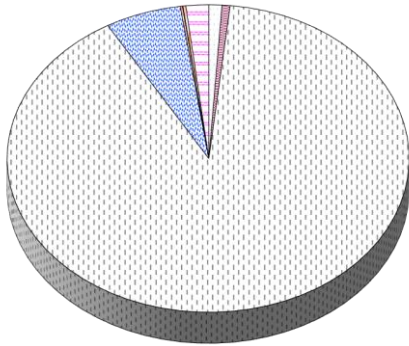
# CASCADES RECOVERY+

Ellis Packaging Ltd., 1830 Sandstone Manor, Pickering, ON  
 August 2017 Waste Diversion Report

You have saved 25804 trees in total in 2017

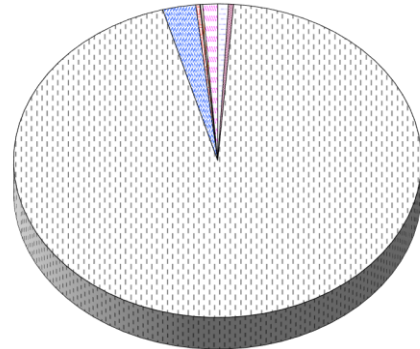


Material Contribution to Diversion 2016



- PBBC
- BCL
- BBB
- CGAMP
- Haz Mats
- 
- 
- 
- 
- OCC
- OMF
- FBB
- Skids
- Misc
- 
- 

Material Contribution to Diversion 2017



## Comments

Notes:

**Did you know...** Cascades Recovery+ offers unique services by providing a comprehensive approach that manages the diversion of discarded materials. We assist our customers in achieving their sustainability goals while delivering cost effective recovery methods. Unlike waste companies whose primary business is “waste to landfill” – our business is to “divert material from landfill” and find ways to use the discarded materials over and over again, working towards zero waste.

For further information regarding your Waste Diversion Report or information on additional material recovery services, please contact: **Daniel Pecarski**  
 National Director Printer Accounts  
 416-231-2525 Ext.: 60202

# CASCADES RECOVERY+

The Sustainable Material Management Group of Cascades Recovery+ hereby certifies that

Ellis Packaging Ltd., 1830 Sandstone Manor, Pickering, ON

through their participation in the Recovery ...PLUS® Program  
attained the following achievements in

**August 2017**

Total Material Recovered: 201.9 Tonnes

Landfilled Reduction: 787.5 Cubic Yards

Energy Saved: 907990 kWh

Carbon Dioxide Emission Reduction: 729.4 Te CO<sub>2</sub>e

Water Saved: 5359780 Litres

Oil (Petroleum) Saved: 534.1 Barrels

Trees Saved: 3433 Mature Trees

**Diversion Rate of 97%**



**Daniel Pecarski**

National Director Printer Accounts

\*Diversion Rate is calculated using material values recovered by Cascades Recovery+ and values provided to Cascades Recovery+